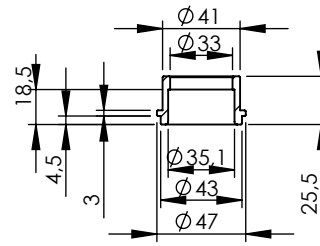
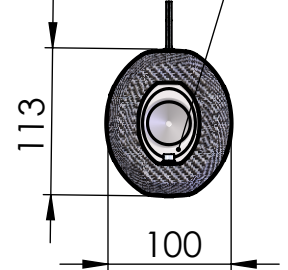


S.s Flange 112A
cod.204569 Sp.5mm



S.s bushing
cod.204833

Db-Killer 59B
Cod.3014228803



2x Knurled collar nut
M8 Cod.200298

Carbon clamp FM4S
Cod.307572505

LV ONE EVO RHS
Stainless steel
Cod.3014228482

E13 92R-02 10423

Silencer bracket s.s.
Prod. cod.3014349501
Purch cod.206673

Manifold bracket s.s.
cod.083275001

3x Knurled collar nut
M6 Cod.200333

3x Allen screw M6X20
T.C.Z.B. Cod.203508

3x Plain washer
Ø6xØ12
Cod.200291

2x S.s bushing
cod.204833

2x Flange
cod.204569

e13 00088F

2x Allen screw
M8X20 T.C.Z.B.
Cod.200722

2x Plain washer
Ø8xØ24
Cod.200321

Welded Db-Killer N°71
Cod.3014349801

Pipe s.s
cod. 3014360205

Nylon zip
cable tie
cod.402489

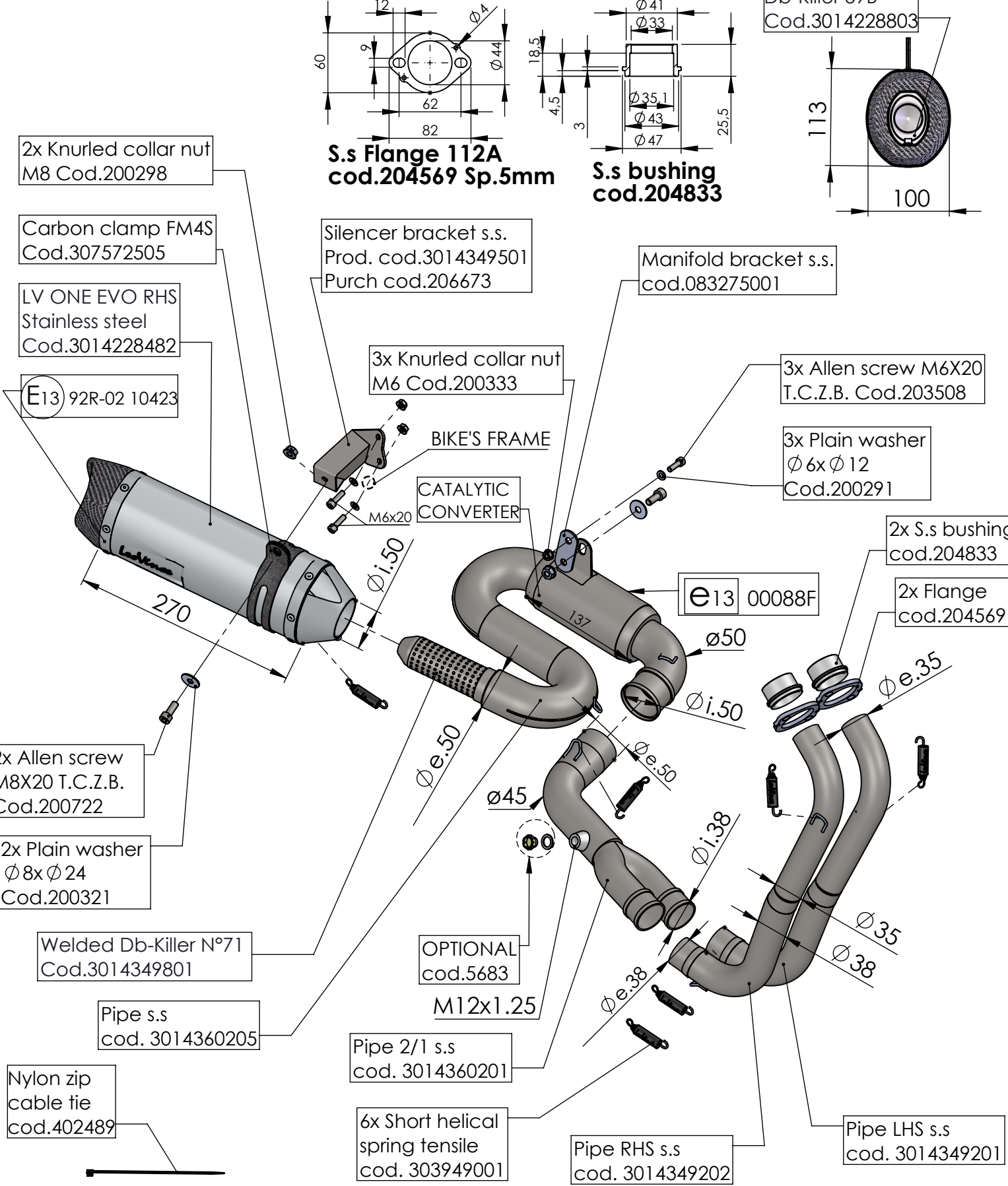
OPTIONAL
cod.5683

Pipe 2/1 s.s
cod. 3014360201

6x Short helical
spring tensile
cod. 303949001

Pipe RHS s.s
cod. 3014349202

Pipe LHS s.s
cod. 3014349201



ART.14360EK

YAMAHA MT-07 (Also fits 35kW version)

FULL SYSTEM - LV ONE EVO - STAINLESS STEEL - APPROVED