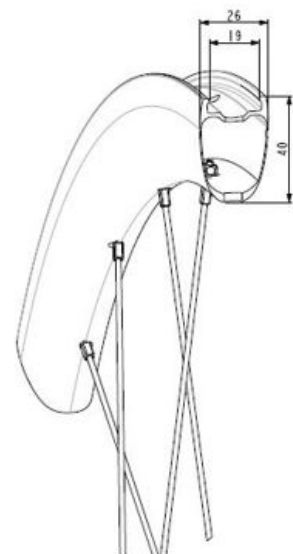
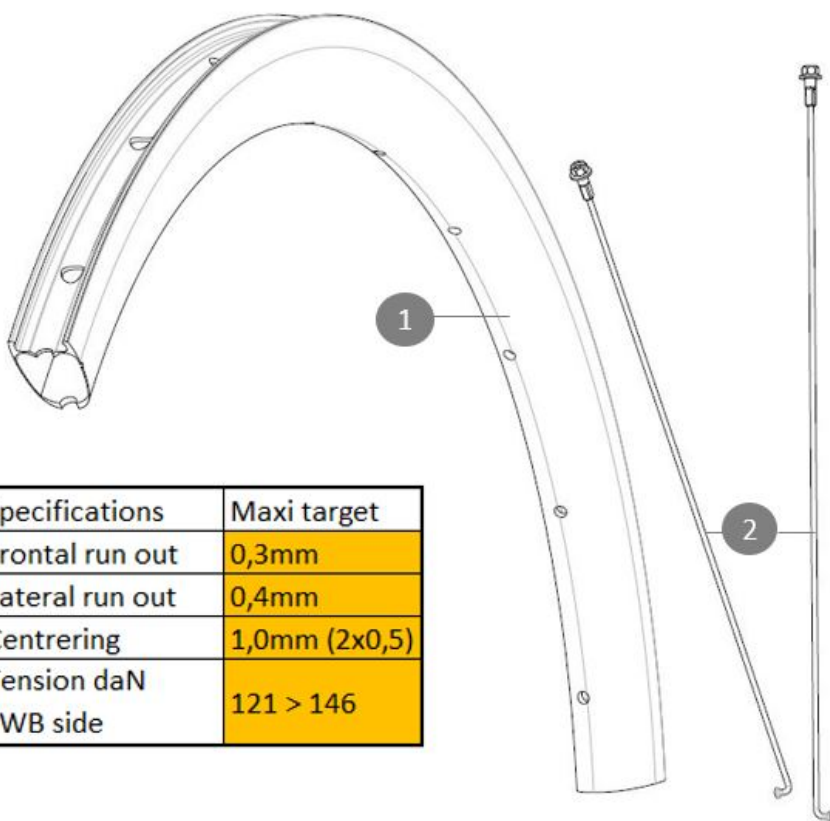


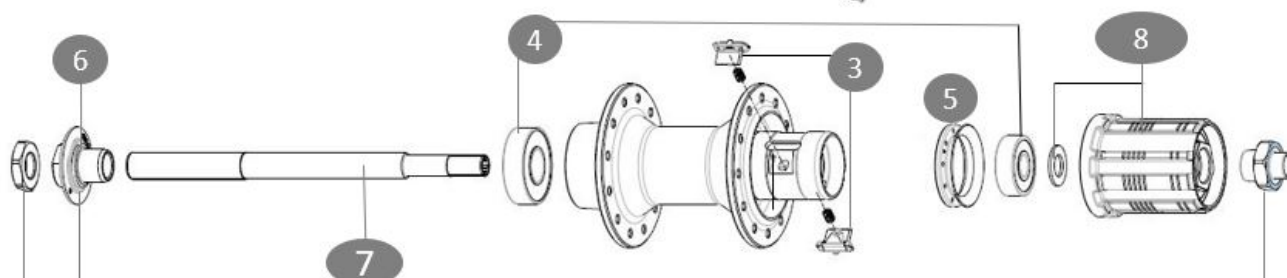
Minimum tyre size: width 23mm - pressure max. 6.75Bar/97PSI
 Maximum tyre size: width 62mm - pressure max. 3.8Bar/55PSI
 ASTM category 1 : road only
 Maximum weight supported by the wheels: must not exceed 120 kg (bike weight included)

REFERENCES WHEELS



Jante avant Cosmic S40 RB

Specifications	Maxi target
Frontal run out	0,3mm
Lateral run out	0,4mm
Centring	1,0mm (2x0,5)
Tension daN FWB side	121 > 146



RIMS



&NBSP;:

1	V00122209	Kit Rear rim Cosmic S40 RB
	V3720101	25mm UST Tape for 19 to 22mm Road Rims

SPOKES

2	V00062531	Kit 16ft/rr Jbent bk rd spk275 27,5"+np
---	-----------	---

HUB SHELLS

3	M40578	FTSL PAWLS KIT (ROAD WHEELS)
4	M40660	REAR HUB 608+6001 BEARINGS
5	99500001	FTSL/FTSX FREEHUB BODY SEAL
6	99603801	SHORT EXPENSIBLE BEARING SUPPORTS > 2008
7	99603901	REAR AXLE QRM ROAD 2008
8	30871101	FTS-L ROAD FREEWHEEL BODY HG11 8/9 compatible

DELIVERED WITH

User guide	
Quick release level 2	
Carbon brake pads with each wheel	
Rim tape mounted on wheel	
UST valve not mounted on wheel	

COMPATIBILITY

Freewheel body: convertible SRAM XD road (kit V2580101 sold separately)	
Freewheel body: convertible SHIMANO HG light road (kit V3850101 sold separately)	
Freewheel body: convertible SHIMANO MS (kit V3990101 sold separately)	
Freewheel body: convertible CAMPAGNOLO ED (kit V3440101 sold separately)	
Freewheel body: convertible CAMPAGNOLO N3W (kit V4270101 sold separately)	

Specifications
RIMS

- **Material** : 100% carbon fiber
- **Height** : 40 mm
- **Internal width** : 19 mm
- **Drilling** : traditional (front 18 holes and rear 24 holes)
- **Braking** : pads
- **ETRTO size** : 622x19TC
- **Tire** : UST Tubeless Ready - Use with Mavic Tubeless Tape

SPOKES

- **Material** : steel
- **Shape** : bent radius, round (front and rear)
- **Nipples** : steel, ABS, black
- **Lacing** : radial (front) - crossed 2 (rear)

WHEEL HUB

- **Body material** : aluminium
- **Body design** : CLASSIC
- **Axle material** : aluminum
- **Axle size** : front 9x100 / rear 9x130 - Quick release only
- **Freewheel technology** : FTS-L
- **Freewheel** : Shimano HG road
- **Bearing technology** : QRM+ automatic setting - sealed cartridge

WHEEL WEIGHTS