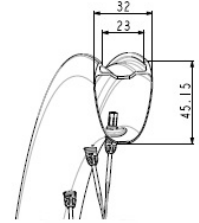
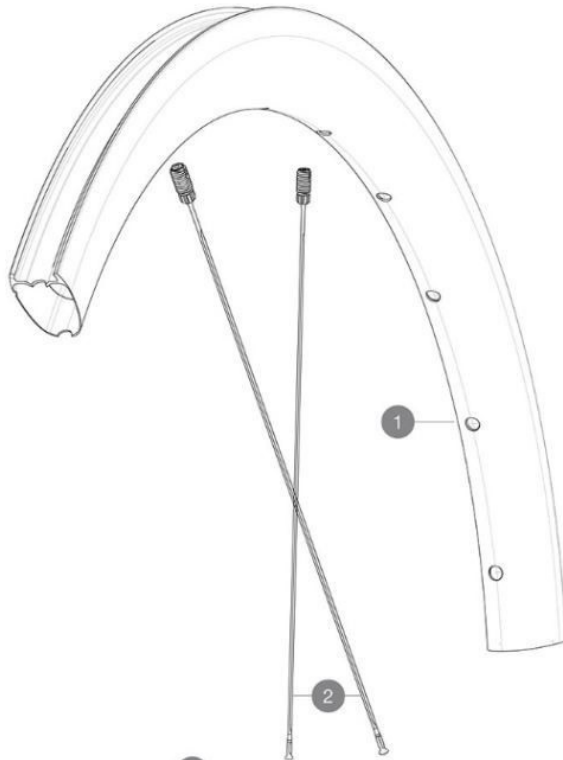


# MAVIC COSMIC SLR 45 DISC 23mm

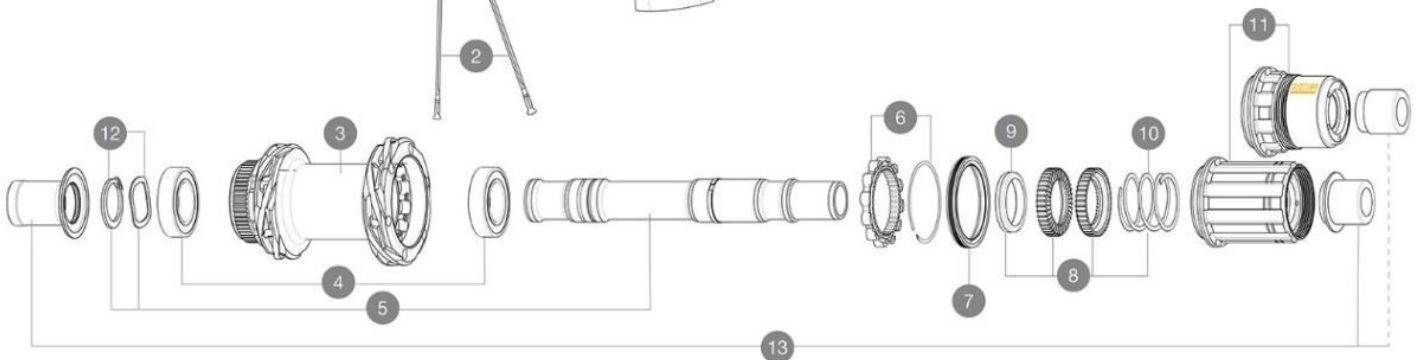
2025  
REAR

Minimum tyre size: width 28mm - pressure max. 5.5Bar/80PSI  
 Maximum tyre size: width 64mm - pressure max. 3.25Bar/47PSI  
 ASTM category 2 : road and offroad with jumps less than 15cm  
 Maximum weight supported by the wheels: must not exceed 120 kg (bike weight included)

## REFERENCES WHEELS



Specifications	Maxi target
Frontal run out	0,4mm
Lateral run out	0,5mm
Centring	1,0mm (2x0,5)
Tension daN FWB side	96 > 116



## RIMS



&NBSP;:

**1** V00122331 Kit Ft/Rr rim Cosmic SLR45 23mm

## SPOKES

**2** V4163701 Kit 12 Front/Rear Cosmic SLR 45 Disc aero stainless spoke 27

## HUB SHELLS

<b>3</b>	N/A	HUB BODY
<b>4</b>	M40076	HUB BEARINGS 17x30x7 6903 x 2
<b>5</b>	V00046431	KIT AXE ID360 142LIGHT CL+CIR
<b>6</b>	V2252701	KIT ID360 INSERT SHAPED EAR LOBE > 2017
<b>7</b>	V2251601	KIT ID360 SEAL + GREASE
<b>8</b>	V2251701	KIT ID360 2 RATCHETS + SPRING + GREASE
<b>9</b>	V2500501	KIT ID360 3 PADS NOISE REDUCING
<b>10</b>	V2251801	KIT 3 ID360 ROAD SPRINGS
<b>11</b>	V3430101	HG11 Freewheel Body ID360
<b>11</b>	V2580101	FREEHUB BODY XD Road ID360
<b>12</b>	V2373001	KIT ADJUST. SYSTEM QRM AUTO ID360 for 17x30x7 bearing

## OPTIONS

V2373401	KIT ID360 135/142 DCL L1 AXLE WITH CLIP
V2510901	ID360 EVO RrAxleAdpt12x135/150
V2510801	ID360 V2 RrAxleAdapt9x135

## ADAPTERS

**13** V3811001 KIT ROAD ID360 RR CL ENDCAP (12MM)

**DELIVERED WITH**

User guide	
UST valve not mounted on wheel	
Multifonction adjustment wrench + spoke M6 wrench with the rear wheel	

**COMPATIBILITY**

Freewheel body: convertible SRAM XD road (kit V2580101 sold separately)	
Freewheel body: convertible SHIMANO HG light road (kit V3850101 sold separately)	
Freewheel body: convertible SHIMANO MS (kit V3990101 sold separately)	
Freewheel body: convertible CAMPAGNOLO ED (kit V3440101 sold separately)	
Freewheel body: convertible CAMPAGNOLO N3W (kit V4270101 sold separately)	
Front axle adapters: 12x100 convertible to 9x100 (kit V2680301 sold separately)	
Rear axle adapters: 12x142 convertible to 12x135 (kit V2510901 sold separately)	
Rear axle adapters: 12x142 convertible to 9x135 (kit V2510801 sold separately) and by changing the axle (V2373401 also sold separately)	

**Specifications****RIMS**

- **Material** : 100% carbon fiber with UD<sup>2</sup> external layer
- **Height** : 45 mm
- **Internal width** : 23 mm
- **Drilling** : Fore Carbon tapeless tubeless technology (front/rear 24 holes)
- **Braking** : disc
- **ETRTO size** : 622x23TC
- **Tire** : UST Tubeless Ready

**SPOKES**

- **Material** : steel
- **Shape** : straight, aero, constricted, antirot (front and rear)
- **Nipples** : brass, black
- **Screw** : M6
- **Lacing** : crossed 2 (front and rear)

**WHEEL HUB**

- **Body material** : aluminium
- **Body design** : INFINITY
- **Disc standard** : Center Lock<sup>®</sup> only
- **Axle material** : aluminum
- **Axle size** : front 12x100 / rear 12x142 - Convertible to quick release with adapters (not included)
- **Freewheel technology** : Instant Drive 360
- **Freewheel** : Shimano HG road
- **Bearing technology** : QRM automatic setting - sealed cartridge

**WHEEL WEIGHTS**