

# TRP



2023 PRODUCTS

# EVOLUTION

*A small innovation in the system, sometimes creates big change – like riders switching from 27.5 to 29-inch wheels which certainly raised the bar during the 2019 season. All of the sudden, good brakes were not good enough. No stone was left untouched as TRP R&D teams traveled to team camps and World Cup races with new iterations of DH-R brakes for riders to test during the 2019 race season. At the same time, a new disc brake performance test machine was installed at Tektro Headquarters in Changhua, Taiwan to run more advanced tests around the clock. After seven months of intensive work between R&D and our race teams, the result was a completely re-designed DH-R: the new DH-R EVO. Next to the top-of-the-line DH-R EVO model, many of the EVO technologies will trickle down to complete a re-designed TRP brake model line.*





## CONTENTS

EVOlution . . . . .	2
Mountain Drivetrain / Brakes . . . . .	6
Road / Road Disc / Gravel / CX . . . . .	20
TT / TRI . . . . .	30
Pedelec / Cargo . . . . .	34
City / Trekking . . . . .	40
Parts & Accessories . . . . .	46
Partners . . . . .	60

# MOUNTAIN



• Aaron Gwin - Intense Factory Racing

# TR12

ENDURO / TRAIL

RD-M850 / SL-M850R

TRP



## DERAILLEUR FEATURES

- Hall Lock
- G-Spec Ratchet Clutch
- G-Spec finishing touches:
- Carbon fiber cage & Upper link
- Extra wide parallelogram pivot
- Sealed cartridge bearings pulleys

*tr12*



## CASSETTE COMPATIBILITY

- Any 12-speed, 10t to 50t cassette from leading makers

## SHIFTER FEATURES

- Shift levers designed and located for optimum performance by Aaron Gwin
- New linear actuation for improved ergonomics and consistent thumb contact
- Enhanced grip & tactile feel built into lever paddles: embossed grooves on advance and release lever
- Carbon fiber upper housing & advance lever position with brake lever
- Ball bearing equipped
- 12 speed
- Tool-free straight lace cable changes
- Rider adjustable home position of lower lever with a 40-degree range

**SYSTEM WEIGHT: 392g / wheel**

## CHAIN COMPATIBILITY

- Any 12-speed chain from leading makers

# DH7

DH / RACE

RD-M860 / SL-M860R

TRP



## DERAILLEUR FEATURES

- Hall Lock
- G-Spec Ratchet Clutch
- G-Spec finishing touches:
- Carbon fiber cage & aluminum upper link
- Extra wide parallelogram pivot
- Sealed cartridge bearings pulleys

dh7



## CASSETTE COMPATIBILITY

- Any 7-speed, max 25t cassette from leading makers

## SHIFTER FEATURES

- Shift levers designed and located for optimum performance by Aaron Gwin
- Enhanced grip & tactile feel built into lever paddles: embossed grooves on advance and release lever
- Carbon fiber upper housing & advance lever position with brake lever
- Ball bearing equipped
- 7 speed
- Tool-free straight lace cable changes
- Rider adjustable home position of lower lever with a 40-degree range

SYSTEM WEIGHT: 392g / wheel

## CHAIN COMPATIBILITY

- Any 11-speed chain from leading makers

# DH-R EVO

DH / RACE  
HD-M846

TRP



## LEVER FEATURES

- Ergonomic lever blade
- 9mm internal brake lever piston
- Index reach adjuster
- I-Spec II compatible
- I-Spec EV adapter option
- TRP and MMX shifter adapter available
- High polished gold or grey, painted silver and matte black finish



## ROTOR COMPATIBILITY

- Six bolt: **RS01E**, **TR42**
- Centerlock: **RC01E**

## CALIPER FEATURES

- Optimized hydraulic flow
- Lightweight hybrid pistons
- 5mm brake hose
- Made for 2.3mm thick rotors
- Top loading pad design
- New resin brake pad
- Banjo hose connection
- Newly formulated mineral oil
- CNC-machined and labeled adapters
- High polished gold or grey, painted silver and matte black finish

**SYSTEM WEIGHT: 310g / wheel**

## PAD COMPATIBILITY

- Performance resin: **P-Q12RS**
- Overall balance resin: **Q20.11**
- Sintered: **P-Q15TS**

# TRAIL EVO

ENDURO / TRAIL  
HD-M843

TRP



## LEVER FEATURES

- Ergonomic lever blade
- 10mm internal brake lever piston
- Index reach adjuster
- I-Spec II compatible
- I-Spec EV adapter option
- TRP and MMX shifter adapter available
- Gloss black finish



## CALIPER FEATURES

- Optimized hydraulic flow
- Lightweight hybrid pistons
- 5mm brake hose
- Made for 2.3mm thick rotors
- Top loading pad design
- New resin brake pad
- Banjo hose connection
- Newly formulated mineral oil
- CNC-machined and labeled adapters
- Gloss black finish

SYSTEM WEIGHT: 307g / wheel

## ROTOR COMPATIBILITY

- Six bolt: RS01E, TR42
- Centerlock: RC01E

## PAD COMPATIBILITY

- Performance resin: P-Q12RS
- Overall balance resin: Q20.11
- Sintered: P-Q15TS

# SLATE EVO

ENDURO / TRAIL

HD-M807



TRP

## LEVER FEATURES

- Ergonomic lever blade
- 10mm internal brake lever piston
- Reach adjuster
- I-Spec II compatible
- I-Spec EV adapter option
- TRP and MMX shifter adapter available
- Matte black finish



## CALIPER FEATURES

- Optimized hydraulic flow
- Stainless steel pistons
- 5mm brake hose
- Made for 2.3mm thick rotors
- Top loading pad design
- New resin brake pad
- Banjo hose connection
- Newly formulated mineral oil
- CNC-machined and labeled adapters
- Matte black finish

**SYSTEM WEIGHT: 315g / wheel**

## ROTOR COMPATIBILITY

- Six bolt: **RS01E**, **TR42**
- Centerlock: **RC01E**

## PAD COMPATIBILITY

- Performance resin: **P-Q12RS**
- Overall balance resin: **Q20.11**

# SPYKE

TRAIL / XC / FATBIKE

MD-M600

ML800

TRP

## LEVER FEATURES

- Integrated Barrel Adj. on Lever
- Aluminum Lever Blade

## CALIPER FEATURES

- Dual Piston Actuation
- Independent Pad Adjustments
- Integrated Barrel Adj. on Caliper
- Dust Cover and Boot

## ROTOR COMPATIBILITY

- Six bolt: RS02M , TR-33
- Centerlock: TR-25

**SYSTEM WEIGHT:** 78g / per lever  
170g / per caliper

## PAD COMPATIBILITY

- Overall balance resin: SP10.11
- Performance resin: P-A12RS
- Sintered: A10TS

## OPTIONS

CABLE & HOUSING KIT



**ROAD / ROAD DISC  
GRAVEL / CX**

# HYLEX RS

ENDURANCE ROAD / GRAVEL / CX

HYLEX PM HD-C802 / HYLEX RS PM HD-C803 /  
HYLEX FM HD-C812 / HYLEX RS FM HD-C813



## LEVER FEATURES

- Integrated Master Cylinder
- Drilled Lever Blade (RS Version)
- S Black Lever w/ Black Caliper and Black Hoods, RS Silver Lever w/ Silver Caliper and Gum Hoods

## CALIPER FEATURES

- Forged One Piece Caliper
- Heat-Isolating Hybrid Pistons
- Top Loading Pads
- Post Mount or Flat Mount
- 11mm Quick Connect Coupler

## ROTOR COMPATIBILITY

- Six bolt: RS02M , TR-33
- Centerlock: TR-25

SYSTEM WEIGHT: 352g / wheel

## PAD COMPATIBILITY

- Performance resin (Post Mount): P-A12RS
- Overall balance resin(Post Mount): SP10.11
- Performance resin (Flat Mount): P-F12RS
- Overall balance resin (Flat Mount): F10RS

## OPTIONS

DI2 KIT, HYLEX REPLACEMENT HOODS

TRP

# HY/RD

ROAD / CX DISC

HY/RD FM HD - C711 / HY/RD C FM HD - C711C /  
HY/RD PM HD - C705 / HY/RD C PM HD - C705C



## ROTOR COMPATIBILITY

- Six bolt: **RS02M** , **TR-33**
- Centerlock: **TR-25**

## CALIPER FEATURES

- Open Hydraulic System
- Integrated Master Cylinder
- Heat Isolating Hybrid Pistons
- Mechanical/Cable Actuation
- Post Mount/Flat Mount Caliper Optional

**SYSTEM WEIGHT: 250g / wheel (PM)**  
**224g / wheel (FM)**

## PAD COMPATIBILITY

- Performance resin: **P-A12RS**
- Overall balance resin: **SP10.11**
- Sintered: **A10TS**

## OPTIONS

**CABLE & HOUSING KIT**

**TRP**

# SPYRE

ROAD / CX DISC

SPYRE FM MD - C610 / SPYRE SL C FM MD - C610 SLC /  
SPYRE C FM MD - C610C / SPYRE PM MD - C605 /  
SPYRE SL C PM MD - C605 SLC / SPYRE C PM MD - C605C



## CALIPER FEATURES

- SLC: Carbon Actuation Arm  
C: Sand-Blasted Black Finished
- Dual Piston Actuation
- Independent Pad Adjustments
- Integrated Cable Barrel Adjuster
- Dust Cover and Boot
- Flat Mount Caliper Optional

**SYSTEM WEIGHT:** 146g / wheel (SLC)  
154g / wheel (Spyre)

## ROTOR COMPATIBILITY

- Six bolt: **RS02M**, **TR-33**
- Centerlock: **TR-25**

## PAD COMPATIBILITY

- Overall balance resin: **SP10.11**
- Performance resin: **P-A12RS**
- Sintered: **A10TS**

## OPTIONS

**CABLE & HOUSING KIT**

**TRP**

# RRL

ENDURANCE ROAD / GRAVEL / CX

TRP



## LEVER FEATURES

- Available with gum or black hoods
- Pull ratio compatible with Spyre and road/cyclocross rim brakes
- Sold as a set (left and right)
- Available in , Anodized Black or Anthracite w/ Black Hoods, Drilled "SR" Lever w/ Black or Gum Hoods

**SYSTEM WEIGHT: 280g / pair**

## CALIPER COMPATIBILITY

- Any cable actuated caliper

# TT / TRI



# HD T910/T912

TT HYDRAULIC DISC

HD-T910 (FOR HB OD 22-24MM)

HD-T912 (FOR HB OD 24-25MM)



## ROTOR COMPATIBILITY

- Six bolt: **RS02M** , **TR-33**
- Centerlock: **TR-25**

## LEVER FEATURES

- Carbon Fiber Lever Blade
- Forged Aluminum Lever Body
- Blip or Di2 Shift Inserts
- Replaceable Grip
- Forged Flat Mount Caliper

**SYSTEM WEIGHT: 390g / wheel**

## CALIPER COMPATIBILITY

- Overall balance resin: **F10RS**
- Performance resin: **P-F12RS**

## OPTIONS

**DI2 KIT, E-TAP BLIPS KIT**

**TRP**



# PEDELEC / CARGO

# C2.3

PEDELEC / CARGO

HD-EU835

HD-EU832

TRP



## LEVER FEATURES

- Ergonomic 3 or 4 finger lever blade
- 10mm internal brake lever piston
- Reach adjustable
- ON/OFF switch (HD-EU835)
- Matte black finish

## CALIPER FEATURES

- Optimized hydraulic flow
- Lightweight hybrid pistons
- 5mm brake hose
- Made for 2.3mm thick rotors
- Top loading pad design
- Banjo hose connection
- Newly formulated mineral oil
- CNC-machined and labeled adapters
- Matte blackfinish

**SYSTEM WEIGHT: 302-324g / wheel**

## ROTOR COMPATIBILITY

- Six bolt: **RS01E**, **TR42**
- Centerlock: **RC01E**

## PAD COMPATIBILITY

- Overall balance resin: **Q20.11**
- Performance metallic: **P-Q12RS**
- Sintered: **P-Q15TS**

# C2.3RS

CARGO/E-CITY BIKE  
HD-EU832S

TRP

## LEVER FEATURES

- New sporty style and ergonomic 1-2 finger blade
- Reach adjustable
- I-spec II compatible
- Matte black finish

## CALIPER FEATURES

- Lightweight hybrid pistons
- 5mm brake hose
- Made for 2.3mm thick rotors
- Top loading pad design
- Banjo hose connection
- Newly formulated mineral oil
- CNC-machined and labeled adapters
- Matte black finish

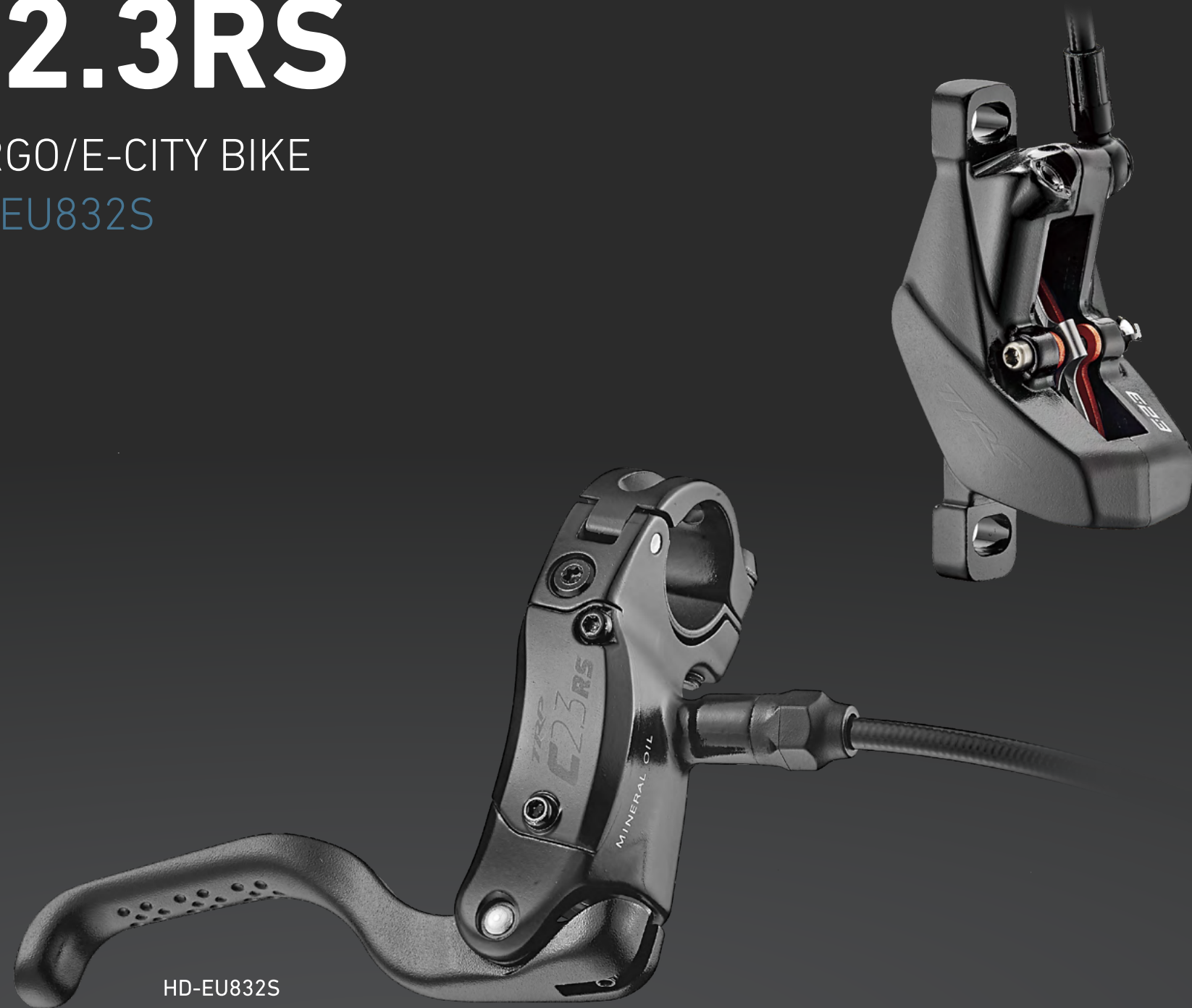
SYSTEM WEIGHT: 302g / wheel

## ROTOR COMPATIBILITY

- Six bolt: RS01E, TR42
- Centerlock: RC01E

## PAD COMPATIBILITY

- Performance resin: P-Q12RS
- Overall balance resin: Q20.11
- Sintered: P-Q15TS



HD-EU832S

# CITY / TREKKING

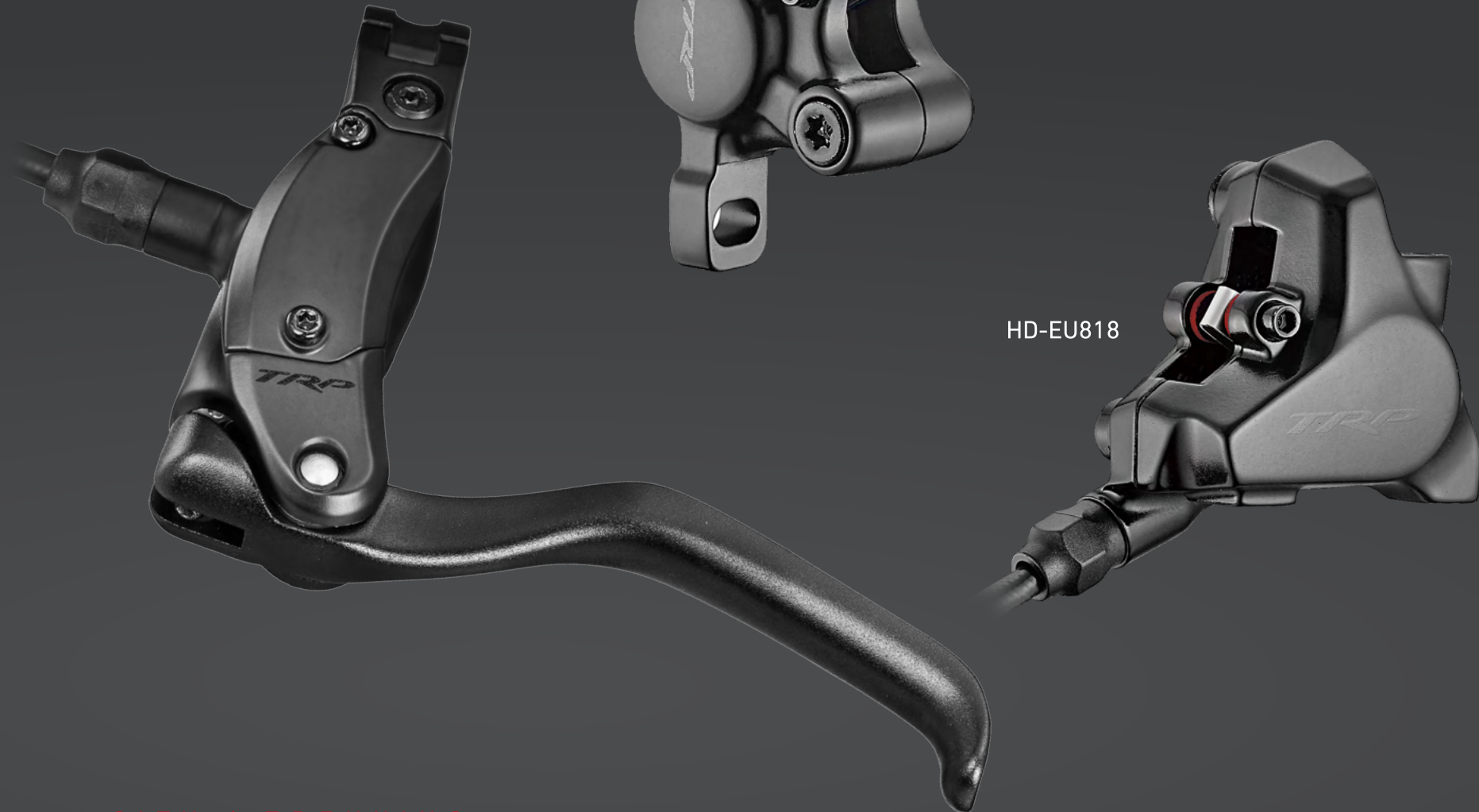


# C1.8

CITY / TREKKING

HD-EU818

HD-EU817



HD-EU817

HD-EU818

## LEVER FEATURES

- Ergonomic 3 finger lever blade
- 10mm internal brake lever piston
- Reach adjustable
- Matte black finish

## ROTOR COMPATIBILITY

- Six bolt: **RS02M** , **TR-33**
- Centerlock: **TR25**

## CALIPER FEATURES

- 5mm brake hose
- Made for 1.8mm thick rotors
- Top loading pad design
- Flat mount and post mount options
- Newly formulated mineral oil
- CNC-machined and labeled adapters
- Matte black finish

**SYSTEM WEIGHT: 285-296g / wheel**

## PAD COMPATIBILITY

- Performance resin (HD-EU817): **P-A12RS**
- Performance resin (HD-EU818): **P-F12RS**
- Overall balance resin (HD-EU817): **SP10.11**
- Overall balance resin (HD-EU818): **F10RS**

**TRP**

# C1.8RS

CITY / TREKKING  
HD-EU817S



HD-EU817S

## LEVER FEATURES

- New sporty style and ergonomic 1-2 finger blade
- Reach adjustable
- I-spec II compatible
- Matte black finish

## ROTOR COMPATIBILITY

- Six bolt: **RS02M**, **TR-33**
- Centerlock: **TR25**

## CALIPER FEATURES

- 5mm brake hose
- Made for 1.8mm thick rotors
- Top loading pad design
- Flat mount and post mount options
- Banjo hose connection
- Newly formulated mineral oil
- CNC-machined and labeled adapters
- Matte black finish

**SYSTEM WEIGHT: 296g / wheel**

## PAD COMPATIBILITY

- Performance resin: **P-A12RS**
- Overall balance resin: **SP10.11**

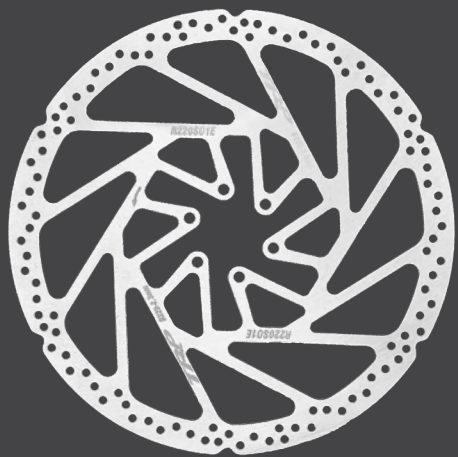
**TRP**



# PARTS & ACCESSORIES

# ROTORS

TRP



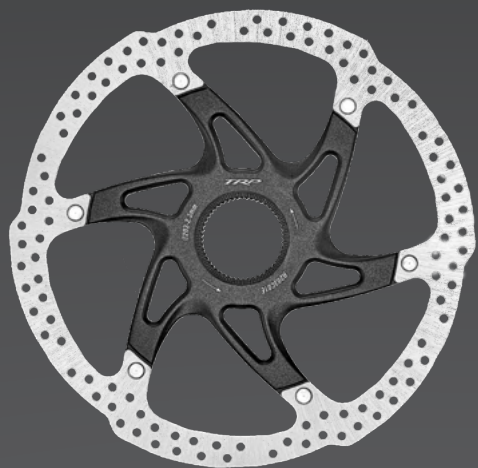
## RS01E SERIES

2.3mm THICKNESS 1-PIECE ROTOR, HIGH HEAT DISPERSION AND TOLERANCE, STAINLESS STEEL WITH 6 UCP BLACK STEEL BOLTS  
AVAILABLE IN 180 / 203 / 220 / 223mm DIAMETERS



## RS02M SERIES

1.8mm THICKNESS 1-PIECE ROTOR, HIGH HEAT DISPERSION AND TOLERANCE, STAINLESS STEEL WITH 6 UCP BLACK STEEL BOLTS  
AVAILABLE IN 140 / 160 / 180 / 203mm DIAMETERS



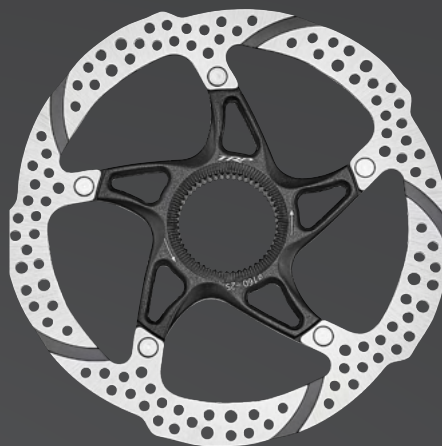
## RC01E SERIES

2.3mm THICKNESS 2-PIECE ROTOR, HIGH HEAT DISPERSION AND TOLERANCE, STAINLESS STEEL, CENTERLOCK (LOCKRING SOLD SEPARATELY)  
AVAILABLE IN 160 / 180 / 203mm DIAMETERS



## TR42 SERIES

2.3mm THICKNESS 2-PIECE ROTOR, HIGH HEAT DISPERSION AND TOLERANCE, STAINLESS STEEL, CNC MACHINED CARRIER, 6-BOLT WITH STAINLESS STEEL HARDWARE  
AVAILABLE IN 180 / 203mm DIAMETERS



## TR25 SERIES

1.8mm THICKNESS 2-PIECE ROTOR, HIGH HEAT DISPERSION AND TOLERANCE, LASER GROOVED STAINLESS STEEL, CENTERLOCK (LOCKRING SOLD SEPARATELY)  
AVAILABLE IN 140 / 160 / 180 / 203mm DIAMETERS



## TR33 SERIES

1.8mm THICKNESS 2-PIECE ROTOR, HIGH HEAT DISPERSION AND TOLERANCE, STAINLESS STEEL, CNC MACHINED CARRIER, 6-BOLT WITH STAINLESS STEEL HARDWARE  
AVAILABLE IN 140/160 / 180 / 203mm DIAMETERS

# COMPARE ROTORS

MODEL NO.	MOUNTING	ALLOY CENTER	THICKNESS	CNC FINISHED	HARDWARE	SIZE
TR25	CENTERLOCK	WITH	1.8MM	W/O	NONE	140/160/180/203
TR33	SIX BOLTS	WITH	1.8MM	WITH	STAINLESS	140/160/180/203
TR42	SIX BOLTS	WITH	2.3MM	WITH	STAINLESS	180/203
RS02M	SIX BOLTS	W/O	1.8MM	W/O	UCP BLACK	140/160/180/203
RS01E	SIX BOLTS	W/O	2.3MM	W/O	UCP BLACK	180/203/220/223
RC01E	CENTERLOCK	WITH	2.3MM	W/O	NONE	160/180/203

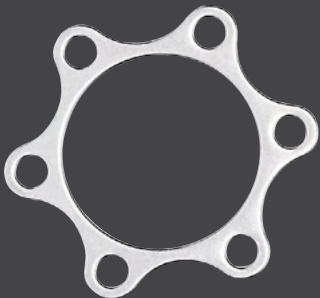
# LOCK RINGS & SPACERS



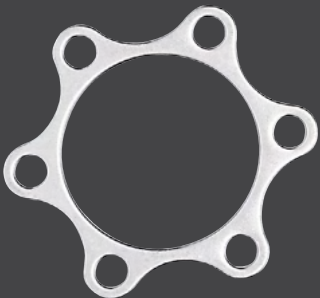
**ROTOR LOCK RING SP-TR80**  
FOR 12mm THRU AXLE HUBS



**ROTOR LOCK RING SP-TR85**  
FOR 15 and 20mm THRU AXLE HUBS



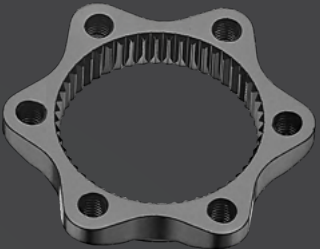
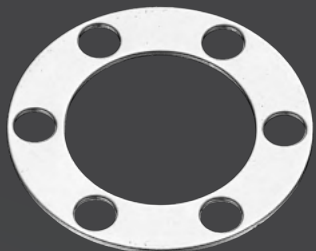
**SPACER 0.5MM**  
6 BOLT ROTOR ALIGNMENT  
SPACER 0.5MM



**SPACER 1.0MM**  
6 BOLT ROTOR ALIGNMENT  
SPACER 1.0MM

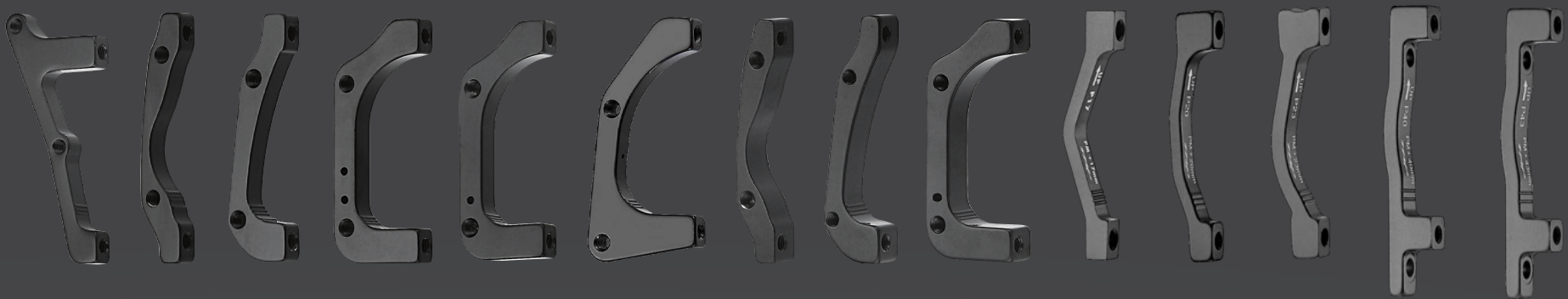


**ROTOR LOCK RING SP-CL81 Adapter Set**  
FOR 12mm THRU AXLE HUBS



**ROTOR LOCK RING SP-CL86 Adapter Set**  
FOR 15mm-20mm THRU AXLE HUBS

# ADAPTERS



A1    A2    B3    B4    A5    I4    A8    A9    A10    P17    P20    P23    P40    P43

I.S. TO POST MOUNT ADAPTERS

POST TO POST MOUNT ADAPTERS



**FF1 ADAPTER**  
FLAT MOUNT TO POST MOUNT  
140 FRONT ADAPTER,  
INCLUDES 2-M5X17

**FF2 ADAPTER**  
FLAT MOUNT TO POST MOUNT  
160 FRONT ADAPTER,  
INCLUDES 2-M5X17

**FR1 ADAPTER**  
FLAT MOUNT TO POST MOUNT  
140 REAR ADAPTER

**FR2 ADAPTER**  
FLAT MOUNT TO POST MOUNT  
160 REAR ADAPTER

**F5 ADAPTER**  
FLAT MOUNT TO FLAT MOUNT  
FRONT  
140 OR 160 REVERSABLE,  
INCLUDES  
2-M5X13 AND 2-M5X14

**F6 ADAPTER**  
FLAT MOUNT TO FLAT MOUNT  
REAR 160,  
INCLUDES 2-M5X13

ADAPTER INSTRUCTION CHART  
NOTE = F : STANDARD FRONT FORK / R : STANDARD REAR FRAME / - : NOT AVAILABLE

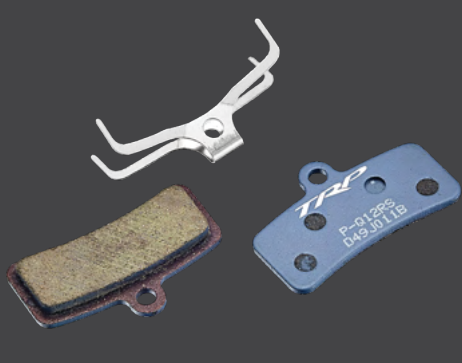
USE SERIES OF DISC BRAKE	I.S.		
	F	R	20MM
ø 140MM	A1	A2	-
ø 160MM	A2	B3	A8
ø 180MM	B3	B4	A9

	ADAPT TO 140	ADAPT TO 160	ADAPT TO 180	AADAPT TO 203	ADAPT TO 220	ADAPT TO 223
PM140	-	P20	P40	-	-	-
PM160	-	-	P20	P43	-	-
PM180	-	-	-	P23	P40	-
PM200	-	-	-	-	P20	P23
PM203	-	-	-	-	P17	P20

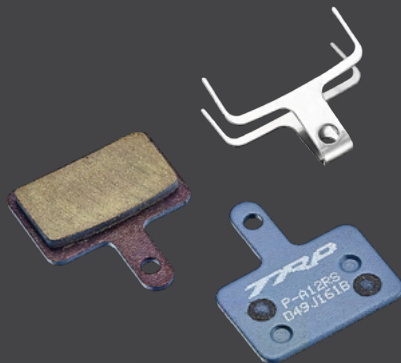
# PADS



## PERFORMANCE RESIN



MODEL NO. P-Q12RS



MODEL NO. P-A12RS

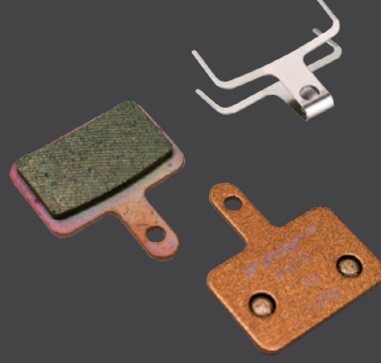


MODEL NO. P-F12RS

## SINTERED



MODEL NO. P-Q15TS

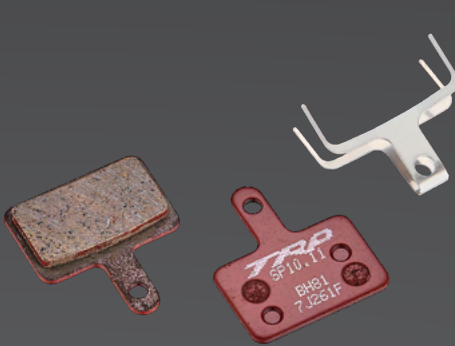


MODEL NO. A10TS

## OVERALL BALANCE RESIN



MODEL NO. Q20.11



MODEL NO. SP10.11



MODEL NO. F10RS



MODEL NO. P727



MODEL NO. P728

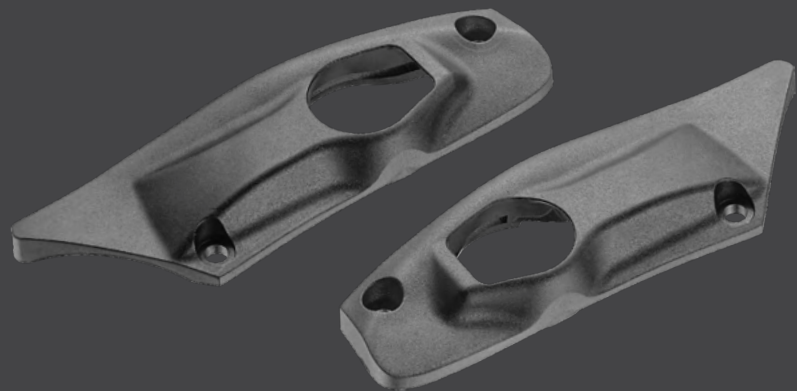
## CARBON RIM PADS

HIGH PERFORMANCE ROAD AND CYCLOCROSS PADS,  
CARBON RIM COMPOUND

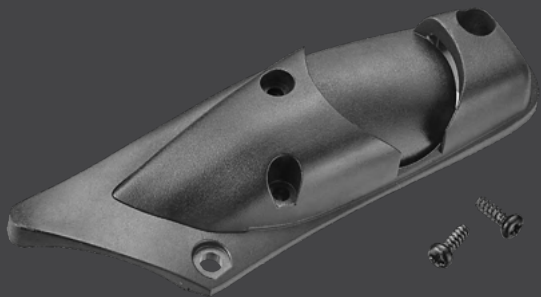
## ALLOY RIM BR AKE PADS

HIGH PERFORMANCE ROAD AND CYCLOCROSS PADS,  
BLACK RED LETTERS

# SHIFT ADAPTERS



**DI2 ADAPTER KIT**  
FOR TT DISC RIGHT & LEFT HAND  
COMPATIBLE WITH SW-R600 and SW-R9150



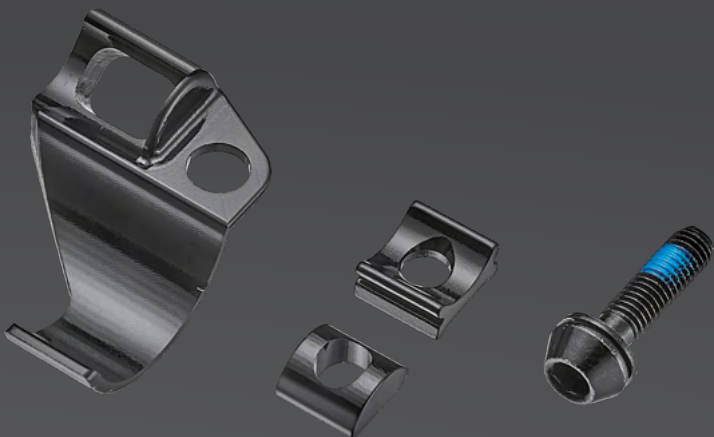
**E-TAP BLIPS ADAPTER KIT**  
FOR TT DISC RIGHT & LEFT HAND  
COMAPTIBLE WITH E-TAP BLIPS



**HD4.0 ADAPTER KIT**  
FOR I-SPEC EV SHIFTER MOUNT

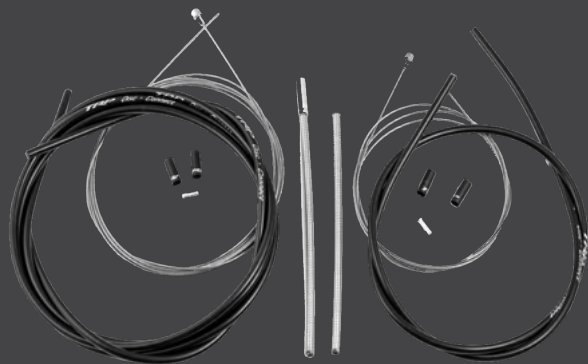


**HD4.1 ADAPTER KIT**  
FOR I-SPEC EV SHIFTER MOUNT



**HD3.7 ADAPTER KIT**  
FOR MATCHMAKER SHIFTER MOUNT  
(LEFT AND RIGHT HAND)

# SERVICE PARTS



**DISC-CONNECT ROAD**  
DISC-CONNECT ROAD CABLE  
AND LINEAR STRAND HOUSING KIT

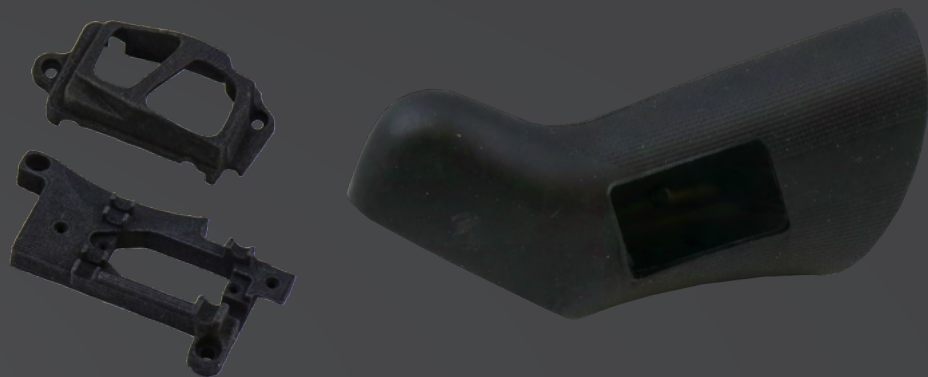


**SPYRE/SPYKE COVER**  
SPYRE/SPYKE DIRT COVER  
AND ACCORDIAN CABLE BOOT

# HOODS



**HYLEX HOOD**  
REPLACEMENT HOODS FOR HYLEX



**HYLEX Di2 KIT RH**  
HYLEX Di2 ADAPTER KIT,  
REPLACEMENT HOODS FOR HYLEX WITH Di2 CUTOUT,  
RIGHT & LEFT HAND  
Compatible for SW-R600

# BLEED KITS



TRP 2000MM BLACK HOSE KIT  
Ø5.5 OIL HOSE



TRP 2000MM BLACK HOSE KIT  
Ø5.0 OIL HOSE



ADVANCED BLEED KIT



HYDRAULIC HOSE COUPLER  
HYDRAULIC HOSE COUPLER  
AVAILABLE FOR 5.0 and 5.5mm HOSES



MINERAL OIL  
AVAILABLE IN 100cc and 1L SIZES

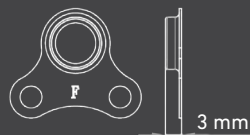


BASIC BLEED KIT

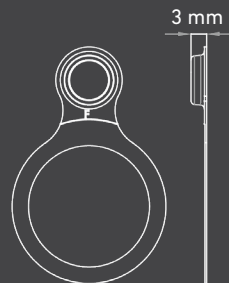


HOSE CUTTER & BARB PRESS

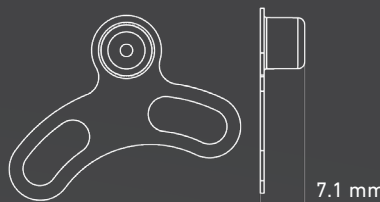
# MAGNET SPEED SENSOR



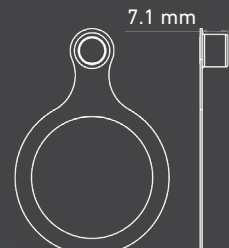
SP-SS10  
THE MAGNET FOR SIX BOLTS ROTOR  
MAGNET TOWARD OUTWARD.



SP-SS20  
THE MAGNET FOR CENTER LOCK ROTOR  
MAGNET TOWARD OUTWARD.



TR02  
THE MAGNET FOR SIX BOLTS ROTOR  
MAGNET TOWARD INWARD.



SP-SS30  
THE MAGNET FOR CENTER LOCK ROTOR  
MAGNET TOWARD INWARD.

	SIX BOLTS ROTOR MODELS	CENTER LOCK ROTOR MODELS
SP-SS10	TRP ALL SIX BOLTS ROTOR	NO COMPATIBLE
SP-SS20	NO COMPATIBLE	TRP ALL CENTER LOCK ROTOR
TR02	RS02M* , RS01E*	NO COMPATIBLE
SP-SS30	USE CL ROTOR ADAPTER SETS(CL HUB TO SIX BOLTS ROTOR): SP-CL81/86  RS02M , RS01E	TR25 (140/160/180), RC01E (160/180)

\* All Dimension

THE CROSS SECTION AREA  
BETWEEN Ø45 TO Ø80 IS THE INTERFERENCE AREA.



FOR SP-SS10  
CLEARANCE BETWEEN THE INTERFERENCE  
AREA AND THE BIKE FRAME MUST BE  
GREATER THAN OR EQUAL TO 5MM  
\*REFER 3D FOR DETAIL

Inward

5.0 mm (min)

FOR TR02/SP-SS30  
CLEARANCE BETWEEN THE INTERFERENCE  
AREA AND THE BIKE FRAME MUST BE  
GREATER THAN OR EQUAL TO 5MM  
\*REFER 3D FOR DETAIL

# PARTNERS



**AUSTRALIA**  
BICYCLE PARTS WHOLESALÉ  
Tel: +61 3 9702 9044  
E-mail: sales@bicyclepartswholesale.com.au  
Website: www.bicyclepartswholesale.com.au

**BENELUX**  
CODAGEX  
Tel: 32 (0)14347474  
E-mail: info@codagex.be  
Website: www.codagex.com

BUZAGLO B.V.  
Tel: +31 (0) 36 52 10 100  
E-mail: info@buzaglo.nl  
Website: www.buzaglo.nl

**CANADA**  
CYCLES LAMBERT INC  
Tel: 1-855-526-2378 (Toll-Free)  
Tel: 418-835-1685 (Québec)  
E-mail: info@cycleslambert.com  
Website: www.cycleslambert.com

LIVE TO PLAY SPORTS  
West Tel: 1-604-552-2930  
East Tel: 1-416-747-1122  
E-mail: AftermarketDivision@livetoplay-sports.com  
Website: www.norco.com

**CHILE**  
BIKE PLANET CHILE  
Tel: +56992261093  
E-mail: ventas@bikeplanet.cl  
Website: www.bikeplanet.cl

**CZECH REPUBLIC**  
UNIVERSE AGENCY SPOL. S.R.O.  
Tel: 224 990 777  
E-mail: petr.fiala@author.cz  
Website: www.uniag.biz

**FRANCE**  
TRIBE SPORT  
TEL: +33 4 94541750  
E-mail: juju@tribesportgroup.com  
Website: www.tribesportgroup.com

**GERMANY**  
E. WIENER BIKE PARTS  
TEL: +49 (0)9721 / 650-10  
Website: www.bike-parts.de

MERIDA & CENTURION GERMANY GMBH  
Tel: 07159 9459300  
E-mail: vertrieb@merida-centurion.com  
Webste: www.centurion.de

HARTJE  
TEL: +49 (0)4251 / 811-20  
E-mail: info@hartje.de  
Website: www.hartje.de

**ITALY**  
B.I.S. SRL  
Tel: +39 0322 889811  
E-mail: bis@bissrl.it  
Website: www.bissrl.it

**JAPAN**  
ASAHI CO., LTD.  
TEL: 0120-177-319  
E-mail: cs@akiworld.co.jp  
Website: www.cb-asahi.jp

MEGA GREEN STAR  
Tel: +886-955-679-244(TW)  
E-mail: shinji.mega23@gmail.com

**KOREA**  
COMET BICYCLE CO. LTD.  
Tel: +82 31 795 8357  
E-mail: hckim@cometbicycle.com  
Website: www.cometbicycle.com

**MEXICO**  
BIKEXTORE  
Tel: +52 442 325 76 83  
E-Mail: hola@bikextore.com  
Website: www.bikextore.com

**RUSSIA**  
VELO TRADE LLC  
TEL: +74957872233  
info@velomasterskaya.ru  
www.velostrana.ru

**SCANDINAVIA**  
SKIFT GEAR  
E-Mail: sales@skiftgear.com  
Website: www.skiftgear.com

**SINGAPORE**  
CRANKWORKZ PTE LTD  
Tel: +65 96928387  
E-mail: raychoi@crankworkz.com.sg  
Website: www.facebook.com/crankworkz

**SOUTH-AFRICA**  
OMNICO (PTY) LTD  
Tel: 021 691 0100  
E-mail: petri@omnico.co.za  
Website: www.omnico.co.za

**SWITZERLAND**  
TEKNO PARTS LTD  
Tel: 0041 32 332 84 68  
E-mail: info@teknoparts.ch  
Website: www.teknoparts.ch

**UK**  
UPGRADE BIKES LTD  
Tel: 44(0)1403 711 611  
E-mail: info@upgradebikes.co.uk  
Website: www.upgradebikes.co.uk

**USA**  
BTI  
Tel: 800-558-8324  
E-mail: info@bti-usa.com  
Website: www.bti-usa.com

DOWNEAST BICYCLE SPECIALISTS  
Tel: 1-800-242-1043  
E-mail: parts@debike.com  
Website: www.debike.com

GIANT BICYCLES USA  
Tel: 1-805-267-4600  
E-mail: info@giantbicycle.com  
Website: www.giant-bicycles.com

HAN'S JOHNSON COMPANY  
Tel: 800.879.1515  
E-mail: sales@hjc.com  
Website: www.hjc.com

HAWLEY, LLC  
Tel: 800-822-1980  
E-mail: sales@hawleyusa.com  
Website: www.hawleyusa.com

J&B  
Tel: 800-666-5000  
E-mail: webinfo@jbi.bike  
Website: www.jbi.bike

KHS BICYCLES  
Tel: 310-632-7173  
E-mail: sales@khsbicycles.com  
Website: www.khsbicycles.com

QUALITY BICYCLE PRODUCTS  
Tel: 1-888-988-8959  
E-mail: customerservice@qbp.com  
Website: www.qbp.com



SEATTLE BIKE SUPPLY  
Tel: 800-283-2453  
E-mail: sales@seattlebikesupply.com  
Website: www.seattlebikesupply.com

WILSON BICYCLE SALES  
Tel: 1-800-877-0077  
E-mail: sales@wilsonbike.com  
Website: www.wilsonbike.com

TRP/TEKTRO USA  
Tel: 1-877-807-4162  
Tel: 1-801-648-7079  
E-mail: info@trpcycling.com  
Website: www.trpcycling.com  
Website: www.tektro-usa.com

NOTES





**TRP**

[trpcycling.com](http://trpcycling.com)